

MANCHESTER UNITED FOOTBALL CLUB

1978/79

Football League Div III
VERSUS

SWINDON TOWN

Saturday 10th November 1979 at 3 p.m.

Official
Programme
20p



**MANSFIELD TOWN
FOOTBALL CLUB
LIMITED**

FIELD MILL GROUND, MANSFIELD
Telephone Mansfield 23567

Chairman **A. F. PATRICK**

Vice-Chairman **J. B. ALMOND, J.P.**

Directors

J. A. BROWN J. W. PRATT

S. S. SCOTT, M.B., Ch.B., M.R.C.G.P.

Secretary **J. D. EATON**

Team Manager **M. JONES**

Hon. Consultant Orthopaedic Surgeon

Mr. A. MOULTON, F.R.C.S.

Hon. Medical Officer **Dr. J. M. SMITH, F.R.C.S.**

Programme Printed and Published by
FENTON PRINTERS LIMITED
Field Mill Printing Works
Nottingham Road, Mansfield

TOWN

Two very valuable — if somewhat fortunate — points from our Tuesday night meeting with Carlisle United, made it eight points from our last four home games . . . a very satisfactory state of affairs.

But the return meeting with the Cumbrian side was a complete reversal of the initial meeting 14 days earlier.

At Brunton Park it was ourselves who dictated the pattern of play for almost all of the 90 minutes.

But on Tuesday it was our visitors who called the tune particularly in the second half.

No goals in the first half, although several good openings just were wasted at both ends, but a five-minute spell inside the second period produced three.

Kevin Bird scored his fifth of the season to put us in front, but then Steve Ludlam equalised four minutes later, only for Steve Taylor to collect his eighth of the campaign within 60 seconds.

Unfortunately our skipper Kevin, had a recurrence of the injury which has been troubling him in recent weeks, but he struggled through the remainder of the 90 minutes, although this upset the rhythm of the entire side.

But we must confess that Carlisle looked one of the best sides we have seen at Field Mill so far, and were perhaps a little unlucky to go away empty handed.

But the fact remains that we have taken three points out of the Cumbrians and so can have no complaints.

And that adds up to 11 from our run of eight matches, four of these games away from home, so we are just one point adrift from what is termed championship form of two points at home and one away.

Certainly the points were some consolation for what must be admitted was a disappointing performance in our return local derby meeting with Chesterfield.

In fact the whole game itself did not live up to the reputation of previous meetings between us.

For a long time a goalless result seemed well on the cards. But around 10 minutes from the end Geoff Salmons found a breakthrough goal and a few minutes later Alan Crawford scored the killer goal.

The other big disappointment of the week was our fate in the draw for the first round of the F.A. Cup in which we have to travel to meet non-leaguers Blyth Spartans who are by no means strangers to the competition.

Only last season they were in with a great chance of reaching Round VI and it was only in a controversial manner that Wrexham finally knocked out the North Easterners.

At Wrexham, the Welshmen only equalised in the last minute after a twice taken corner kick from which Dixie McNeil found the vital equaliser.

And it was a hotly disputed penalty which saw Wrexham through in the replay at Newcastle United's ground, St. James' Park.

So we will by no measure underestimate the enormity of our task.

The match is scheduled for Saturday, 24th November, further details will be announced as soon as possible. Before leaving our first team scene we must not omit to mention our very good win over Gillingham which helped to keep our recent run of success on the boil. ■

**Manufacturers of
Telecommunication
and
Electronic
Equipment**



WHITELEY

**ELECTRICAL
RADIO CO LTD
MANSFIELD**

FOCUS



But it is pleasing from one aspect that the Carlisle match was the end of our two matches per week league stint for a few months . . . except of course for over the Christmas and New Year holiday period.

To-day we extend a welcome to the players, officials and supporters of Swindon Town. The team is under the guidance of Mr. Bobby Smith who took over of course from our former and popular manager Mr. Danny Williams who is still with the club in an executive capacity.

Mr. Smith was formerly manager of Bury and Port Vale and in his playing days included Bury and Blackpool in his clubs.

Swindon are very much in contention, as usual for a place in the promotion race, and are also figuring prominently in this season's Football League Cup of which they were winners in the 1968-69 season.

In that final they met The Arsenal at Wembley and defeated The Gunners in extra time, and it was Mr. Williams who was the then manager.

This season they are in with a chance of a repeat

meeting with the Londoners for if Arsenal can win their replay against Brighton then the two clubs must meet again.

After a run of success Swindon lost in midweek going down surprisingly 2-0 at Plymouth, after beating league leaders Sheffield United 3-2 at the County Ground, on Saturday.

If we are to continue our fine home form we shall certainly have to be at our best this afternoon, for we are sure that like all previous encounters with the Swindon side, we shall find them a most difficult side to overcome.

We must remind you that on Monday evening we shall be involved with our Division II neighbours Notts County in the semi-final of the Nottinghamshire Football' Associations County Cup competition.

The winners of course, will meet the holders Nottingham Forest in the final later in the season.

Kick off is at 7.30 p.m.

Tickets for the West Stand are now on sale, but for the rest of the ground it will be pay at the turnstiles.

Notts F.A. County Cup Semi-Final

MANSFIELD TOWN v NOTTS COUNTY

Monday 12th November 7.30 p.m.

Usual Admission Charges ALL PAY

BE ON THE BALL...

with the NCB-it's a great career

EXPERIENCED COAL FACE AND
DEVELOPMENT WORKERS required at most
Nottinghamshire Collieries

NATIONAL COAL BOARD North Notts Area-
Recruitment Office, 10 Bridge Street, Mansfield Tel: 27018



Neville E.M.V.

for

VAUXHALL & BEDFORD
MAIN DEALERS

MANSFIELD 26101 & SUTTON-IN-ASHFIELD 511414

NORTHERN DAIRIES

DELIVER TO YOUR DOOR

MILK

Thin and Medium Sliced Bread, Hovis ★ Cream, Butter, Potatoes ★ Brown Eggs
Orange and Lemon Concentrated Fruit Drinks ★ Orange and Grapefruit Pure Unsweetened Fruit Juice
Mineral Waters — Six Flavours

for a daily service Ring MANSFIELD 25843 - 25844
LITTLE BARN LANE, MANSFIELD

**Keep in step
with STAGS
each week
with
Andy Smart** in the

Notts
Free Press

Plus all the local News
and Sport.

10p

WHEN IN MANSFIELD
visit...

**CO-OPERATIVE
HOUSE**

THE
BIG
STORE

Our Many departments cater for your
entire family needs

FOR LUNCHEONS AND TEAS

VISIT OUR

FULLY LICENSED CAFE

QUEEN STREET

Parties catered for

**MANSFIELD & WORKSOP
CO-OPERATIVE SOCIETY
LIMITED**

**co
op**

THIRD DIVISION SCENE

by
Tony Pullien

Swindon provide another shock for Blades

Swindon Town made short work of Third Division leaders Sheffield United when they beat them 3-2 at the County Ground last Saturday. The Wiltshire side was two goals up within half an hour and it wasn't until three minutes from the end, when Goalkeeper Jimmy Allan had the misfortune to concede an own-goal, that the Sheffield side was really in the game. Their win over the leaders was Swindon's fifth successive victory and it re-established them as one of the firm promotion favourites. Last Saturday's game attracted their biggest League attendance of the season — 11,835

Sheffield Wednesday also drew their best gate (23,230) for a League game this season for the local derby against Barnsley. But here the visitors extracted ample revenge for their 0-3 home defeat by Wednesday on the opening day of the season. Second-half goals by Glyn Riley and Mike Lester gave Barnsley a 2-0 win to do further damage to Wednesday's sad home record.

Wednesday have managed to win only three of their 11 home League and Cup ties this season yet, away from home, they have recorded six victories in ten games. As Wednesday are one of the best supported home teams in the Third Division it is difficult to put a finger on the reason for their strange record. Certainly it's something that has been worrying manager Jack Charlton.

Bury's Dave Hatton became the eighth managerial victim of the season when he was dismissed from his post last week. Mr. Hatton joined Bury as a player in 1976 and was appointed player-manager a year later. Last summer he decided to hang up his boots, after injury, to concentrate on the managerial side.

But the Shakers have had a very poor start to the season so far and, with relegation threatening, the board decided to make a change at the top.

Nicky Chatterton scored for his third game in succession for Millwall, the last two both being winning goals. Last Saturday he converted the only goal of the game, at home to Blackburn, from the penalty spot with only five minutes to go. It was his sixth goal of the season. Nicky is certainly rapidly repaying the £100,000 fee Millwall paid Crystal Palace for his services last season. Last week's win enabled the Lions to leap-frog over Sheffield United into top place.

Team up with . . .

PACKER SPORTS

The players choice

26 REGENT STREET
MANSFIELD
Telephone 24499



INTERSPORT

Some lucky Third Division fan could find himself off on a dream trip to the U.S.A. at the end of the season with £200 spending money in his pocket! The winner of Rothmans Football Supporter of the Year competition will receive a fortnight's holiday in the U.S.A. for two people and a guided tour of the American soccer scene. The supporters' club to which he belongs will receive a cheque for £500.

The runner-up will receive £500 for himself and £300 for his club whilst the third placed fan will win £200 personally and a further £200 for his club.

Supporters' clubs attached to each of the English and Scottish League clubs can put forward one candidate for the competition, to be organised initially on a regional basis. The competition is being promoted in conjunction with the National Federation of Football Supporters' Clubs.

Only clubs in membership of the Federation are eligible though special dispensation will be given to those clubs, not already in membership, who apply before the end of the year. As the annual subscription is a mere £5.25 this would prove no obstacle for, in addition to the chance of winning these lucrative cash prizes from Rothmans, clubs will have the advantage of a unique insurance scheme for members travelling to games, an exclusive national fund-raising scheme and many other benefits of membership.

All the League Clubs are being circularised with entry forms and rules. Any non-federation clubs, anxious to enter, can receive full details by writing to the N.F.F.S.C. at 1 Saville Road, Bath, Avon. The competition is designed to promote the type of supporter who is a benefit to the game and is an attempt to give national publicity to the many thousands of genuine fans who are thoroughly sick of the attention that has been paid to the hooligan minority.

Play the Game . . .

Stags
Goldliner Game
Lottery

The Ticket is fun and exciting to play, and offers a top prize of £1,000, as well as a host of smaller prizes.

All prizes can be claimed from the pools office.

PLAY THE GAME NOW

Why not take a few tickets each week and ask your family, friends, and workmates if they would like to buy one, in return for your help you receive commission on all sales, plus a bonus on big winners. Interested? Then call at The Pools Office, we are open 6 days a week from 9.30 a.m. to 5.30 p.m. or ring us on Mansfield 25877

Club Crest



History repeating for Swindon ? by Tony Pullen

Swindon fans are beginning to wonder — and, indeed, hope — that this is going to be like season 1968/69 all over again. That was the year Swindon defeated Arsenal at Wembley in the League Cup Final and then went on to gain promotion to the Second Division.

After an exciting opening to the season, the Robins are wonderfully placed to go for promotion and, with victories over Portsmouth, Chester, Wimbledon and First Division Stoke already behind them in the League Cup, they are now well within sight of Wembley again.

Swindon are very much an attacking team. Both Andy Rowland and Alan Mayes have been scoring profusely this season and there were only four games, of their opening 23, when one or the other failed to get his name on the scoresheet.

With 14 goals after last Saturday's game, Mayes was one of the country's leading scorers. Rowland had 12 to his credit.

Though Swindon are unbeaten in four away League Cup ties this season, their away form has not been at all promising. Their only away wins were surprisingly, at Colchester (3-2) and Blackpool (1-0) but they were beaten in five other away games at Sheffield United (1-2), Rotherham (0-3), Sheffield Wednesday (2-4), Reading (1-2) and Wimbledon (0-2).

Outstanding home performances have kept Swindon well up among the promotion chasers but they will undoubtedly be looking for a repetition of their away League Cup form as they seek further promotion points today.

We can expect to see Ian Miller lining up in attack with Rowlands and Mayes unless Chic Bates has earned a recall. He came back into the side at Blackpool, in place of Miller, a fortnight ago and a few days later struck their winning goal at Wimbledon in the fourth round of the League Cup.

Midfield players are usually Ray McHale, Roy Carter and Brian Williams whilst the defence has been lining up with Jimmy Allan in goal and a back four of John Templeman, Billy Tucker, Ken Stroud and Russell Lewis.

When Swindon won their fourth round League Cup tie at Wimbledon, manager Bobby Smith refused to draw comparisons with 1969. "I am too professional to be bothered about what happened at Wembley ten years ago," he said. "Apart from our youth team coach John Trollope, there is nobody left at the club who played in that match, so it doesn't matter."

After the fifth round draw had given them another away tie, against the winners of Arsenal and Brighton, Mr. Smith shrugged: "We are being asked to do it the hard way, but don't write us off. Swindon often come alive in the Cup."

Swindon Town created a sensation when they beat mighty Arsenal at Wembley to win the League Cup as a Third Division club in 1969. Since then, however, they have not had a lot of success in this tournament and this season was only the third time that they have subsequently survived to the fourth round stage.

Now they are into the quarter-finals and this week were wondering if their opponents will be the side they stunned at Wembley — Arsenal!

POOLS OFFICE OPENING HOURS:

Monday to Saturday 9.30 a.m. — 5.30 p.m.

(first team midweek matchdays open until 9.30 p.m.)

All Lottery inquiries Telephone 25877

CLUB SHOP OPENING HOURS & COACH BOOKINGS

Thursday each week 10 a.m. — 5 p.m.

Friday (only if first team away Sat.) 9 a.m. — 5 p.m.

Saturday on first team home matches 10 a.m. — 5 p.m.

First team midweek matchdays 4.30 — 9.30 p.m.

Lunch closed 1—2 p.m.

Meet Our Visitors . . .

SWINDON T



**Back Row (left to right) : Wilf Tranter, (Coach), Brian Williams, Kenny Stroud, Russell Lewis, John Templeman, Jimmy All
Roberts, Chris Ogden, Andy Ford, Billy Tucker, Chris Kamara, Roy Carter, Bob Smith (Team Manager).**

Front Row (left to right) : Bryan Hamilton, Paul Gilchrist, Chic Bates, Ray McHale (Captain), Ian Miller, Alan Mayes, Andy

M T



is, John Templeman, Jimmy Allan, Kevin
th (Team Manager).

1), Ian Miller, Alan Mayes, Andy Rowland.

BOB SMITH — THE TEAM MANAGER.

Although not much older than some of his players, Bob Smith is managing his third League club, the others being Bury and Port Vale. He comes from the North of England and started his playing career with Manchester United. He did not play in the first team at that club but did serve Scunthorpe, Brighton, Chester and Hartlepool as well as being coach at Bury before taking over as manager. He managed Bury when they won promotion to the Third Division in 1973/74.

WILLIAMS, Brian. Midfield. Another of Swindon's former Bury players, having made 148 League appearances for that Club. in midfield and attack from 1971 until 1977, when he moved to Queens Park Rangers. The London club were passing through a difficult time and he only made 9 full and 10 substitute appearances there. He signed for Swindon in the 1978 close season and made 23 League appearances last season. A very competitive player he is also naturally left sided.

TUCKER, Billy. Defender. From Hereford, he played centre half for Hereford United in their Southern League days. He stayed with that club after election to the League and played in the side that eventually reached the Second Division, making 135 League appearances. He moved to Bury in December 1976 and made his name with that club before moving to Swindon in June, 1979.

TEMPLEMAN, John. Defender. John comes from Yarton (Sussex) and was originally with Portsmouth, although he made his League debut for Brighton in the 1966/67 season. He was a member of the side which won promotion to the Second Division in season 1971/72 but after 229 League games as full back he moved to Exeter City in 1974. He made over 200 first team appearances for Exeter before signing for Swindon in the 1979 close season.

INTRODUCING SWINDON

ALLAN, Jimmy. Goalkeeper.

Jimmy comes from Inverness and was signed from Scottish non-league football in October 1970. Although he made his debut in September 1971, he had to wait for a first team place and had made 183 League appearances to the end of the last season.

BATES, Chic. Forward.

A native of West Bromwich who played part time Southern League football for seven years before starting his League career with Shrewsbury Town in 1974. He made 160 League appearances before signing for Swindon in January 1978 and had made 52 more to the end of last season. A hard working player who finished last season in a midfield role.

HAMILTON, Bryan. Midfield.

From Belfast, he is a Northern Ireland International with 46 caps to his credit, his first English club was Ipswich from where he was transferred to Everton and Millwall before a move to Swindon as player-coach in November 1978. He made 17 League appearances for Swindon last season as well as his usual attacking midfield role he has also played at full back for both Club and Country.

LEWIS, Russell. Defender.

From Wales, he was signed from Welsh League football in the early part of the 1975/76 season and made 13 League appearances at the end of the last season all as a central defender.

MILLER, Ian. Forward.

Ian comes from Perth, but his first League Club was Bury for whom he made 9 League appearances. He moved to Nottingham Forest but did not make the first team there. A move to Doncaster in August, 1975 brought a regular first team place and he played 124 League games before his transfer to Swindon in the summer of 1978. A traditional right winger he played 44 League games for Swindon last season.

McHALE, Ray. Midfield.

A native of Sheffield he made his League debut for Chesterfield in season 1971/72. After 123 League games he signed for Halifax Town and did not miss a single first team game whilst there making 86 League appearances. He signed for Swindon in September, 1976 and had made another 130 appearances in the League to the end of last season. He usually plays in the centre of midfield linking the play, but has a hard shot when in sight of goal.

CARTER, Roy. Midfield.

The 1979 'Player of the Year' at Swindon, He was born at Torpoint, Cornwall and played part-time football for Falmouth in the Western League before joining Hereford United in the summer of 1975. He played in the side which won promotion to Division II and made 64 League appearances before leaving for Swindon in December, 1977. He had made 66 appearances for Swindon to the end of last season mainly in a midfield role, but he is a versatile player and has filled in at centre half when required.

STROUD, Ken. Defender.


Originally from London, Ken is one of the longest serving players at the Club having joined from school. He signed professional in 1970 and made his League debut in 1971/72 season. He had played 200 League games to the end of last season, many of them in midfield, although more recently he has settled into his favourite position playing beside the centre half in the middle of the defence.

ROWLAND, Andy. Forward.

From Derby he joined his home town club, but was unable to break into the first team. A move to Bury in season 1973/74 gave him first team football and he made 166 League appearances before his move to Swindon in September, 1978. A strong traditional centre forward, he made 28 League appearances for Swindon last season.

MAYES, Alan. Forward.

Alan comes from London and his first professional club was Queens Park Rangers, although he did not make the first team there. In 1975 he moved to Watford and played in their Fourth Division championship side of 1977/78. He played over 100 games for Watford as well as 10 on loan to Northampton Town and signed for Swindon in February, 1979. He played 22 games for Swindon last season and had the usual sort of distinction of scoring a hat trick on his debut in a game at Rotherham. A mobile player who normally operates beside the centre forward.

PROGRAMME

WORLD

We have thousands of Football Programmes for sale and are looking to add to our stock all the time. If you have either gaps in your collection or a collection to sell get in touch with the experts at —

PROGRAMME WORLD
293 ARKWRIGHT STREET NOTTINGHAM
Telephone: (0602) 866251

JLS

JLS Paint Supplies Limited

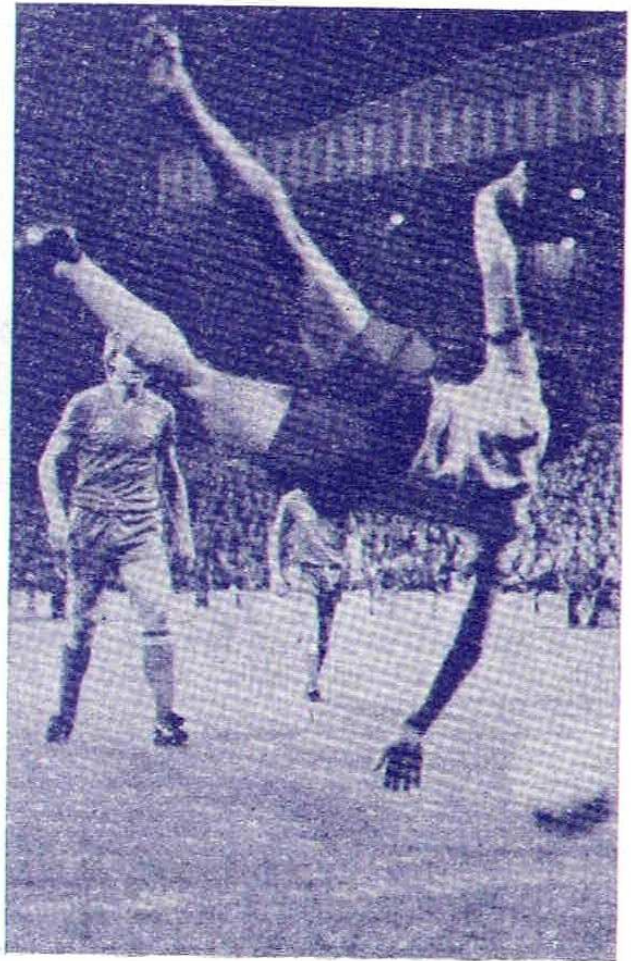
Wholesale Paint & Wallpaper Merchants

Wood Street Mansfield Notts

Telephone Mansfield 642802



Terry Austin claims the match ball at the end of the Rotherham game to celebrate the first hat-trick of his career.



Russ Allen in acrobatic style tries an overhead kick at goal.

Visit our Club Shop

ITEMS AVAILABLE

SCARVES from £1.25
 PEAKED CAPS £1
 BEANY HATS £1.20
 WOOLLY HATS 90p
 TRACK SUITS from £8.95
 TEE SHIRTS from £1.35
 TIES £1.95
 JUMPERS £5.95
 GENTS BRIEFS £1.10
 FOOTBALL STRIP
 FOOTBALL SOCKS from 68p
 SEPARATE PLAYERS
 PHOTOGRAPHS
 SWEAT BANDS 65p

ROSETTES 20p
 TEDDY BEARS from £4.50
 PLAYERS PICTURE BADGES
 METAL EMBLEM BADGES 40p
 KEY RINGS from 25p
 BELTS 75p
 FUR PURSES 35p
 WHITE SPORTS SOCKS 75p
 RINGS 35p
 PENANTS 65p
 IDENTITY BRACELETS 50p
 WAVY HANDS 35p
 MUGS 65p
 PATCHES from 45p
 STICKERS from 10p

PENANTS 45p
 CAR WINDOW STICKERS 15p
 20p
 CAR BADGES £2.50p
 PIN PICTURES £4.95
 PENS 15p
 LIGHTERS 50p
 HOLDALLS £2.50 & £3.50
 BOOK MARKS 15p
 PROGRAMMES as priced

Please allow 20p postage and packing.

All items are subject to availability.

Ashfield Carburettors and Components Ltd.

ZENITH • SOLEX
 STROMBERG
 S.U. • WEBER

LADYBROOK LANE
 MANSFIELD
 Telephone Mansfield 26297

CLUTCH ASSEMBLIES
 BRAKE SHOES
 BRAKE PADS

EXCHANGE/RECONDITIONED CARBURETTORS

BEWAC

Distributors: Austin Morris • MG
 Main Dealers: Rover • Triumph

24-Hour Recovery Service

Leyland Cars



SUPERCOVER

*Even if you never need it,
 it's good to know you've got it*



Bewac Motors (Mansfield) Ltd

Southwell Road West • Mansfield • Notts • Telephone 31331

MEMBER OF THE INCHCAPE GROUP OF COMPANIES

Statistics

LEAGUE—DIVISION III										APPEARANCES & GOALSCORERS 1779-80				
	P	W	D	L	W	D	L	F	A	Pts	Appearances		Goals	
											League	Cup	League	Cup
Millwall	18	7	2	0	2	4	3	29	20	24	15	5	2	1
Sheff. Utd.	18	6	0	3	5	1	3	33	23	23	16	5	11	2
Colchester	18	4	4	1	5	1	3	25	19	23	18	6	4	1
Brentford	17	5	1	2	4	3	2	27	19	22	9	5	1	
Swindon	17	7	2	0	2	0	6	26	22	20	18	5		
Sheff. Wed.	18	3	3	3	4	3	2	28	25	20	9	4		
Chesterfield	18	5	4	0	1	3	5	24	20	19	3			
Grimsby	18	6	1	2	2	2	5	22	23	19	18	5		
Reading	17	6	2	1	1	3	4	16	17	19	9	5	1	
Oxford	17	5	2	2	1	4	3	27	23	18	18	5		
Hull	18	3	5	1	1	5	3	21	20	18	9	4		
Chester	17	4	3	1	2	3	4	22	22	18	3			
Barnsley	18	5	2	2	2	2	5	18	21	18	18	5	1	1
Gillingham	16	3	3	2	3	2	3	21	16	17	16	3		
Rotherham	16	6	0	2	2	1	5	29	25	17	8			
Mansfield	18	6	1	2	0	3	6	24	23	16	15	2		
Blackburn	18	3	3	3	2	3	4	17	17	16	2			
Carlisle	18	4	4	1	2	0	7	23	24	16	15	2		1
Blackpool	18	5	1	3	1	3	5	30	34	16	2			
Exeter	18	5	1	3	1	2	6	21	32	15	2			
Wimbledon	17	2	3	3	2	2	5	19	29	13	2			
Plymouth	18	4	3	2	0	1	8	19	23	12	17	6	5	3
Southend	16	3	1	4	1	3	4	16	23	12	13	4		1
Bury	18	3	3	3	1	0	8	18	25	11				

BRM
BENHAM & RIGBY
MOTORS

MECHANICAL REPAIRS & BODYWORK
REBORING & CYLINDER HEAD RECONDITIONING
GUARANTEED EXCHANGE ENGINES INDIVIDUALLY HAND BUILT

Selected Used Cars

STANTON MILL
BATH LANE
MANSFIELD 27390

North Notts Stockist
 CORDS PISTON RINGS

MANSFIELD TOWN F.C.
FOOTBALL LEAGUE DIV. III FIXTURES 1979-80

		F A		F A	
Aug. 11	S	York City (LC)	H 1 0	8 S	Grimsby T. A
14	Tu	York City (LC)	A 2 3	15 S	F.A. Cup 2
18	S	Chesterfield	H 3 2	21 F	Plymouth A. H
21	Tu	Rotherham U.	A 1 2	26 W	Blackburn R. A
26	S	Exeter City	A 1 2	29 S	Exeter City H
29	W	Reading (LC.2)	A 3 4	1980	
Sep. 1	S	Hull City	H 1 1	Jan. 1	Tu Brentford H
4	Tu	Reading (LC.2)	H 4 2	4	F Southend (3) A
8	S	Barnsley	A 0 1	12	S Hull City A
15	S	Oxford United	H 1 0	19	S Barnsley H
18	Tu	Colchester U.	A 1 2	26	S Wimbledon (4) H
22	S	Sheffield Utd.	H 3 4	Feb. 2	S Oxford Utd. A
25	Tu	Q.P.R. (LC.3)	H 0 3	9	S Sheffield Utd. A
29	S	Reading	A 0 1	16	S Reading (5) H
Oct. 1	M	Colchester U.	H 0 1	23	S Bury A
8	S	Sheffield W.	A 0 0	Mar. 1	S Millwall H
8	M	Rotherham U.	H 5 1	8	S Gillingham (6) A
13	S	Bury	H 1 0	14	F Sheffield W. H
20	S	Millwall	A 2 2	22	S Swindon T. A
23	Tu	Carlisle Utd.	A 1 1	29	S Chester H
27	S	Gillingham	H 2 0	Apr. 1	Tu Plymouth A. A
Nov. 3	S	Chesterfield	A 0 2	5	S Blackburn R. H
6	Tu	Carlisle United	H 2 1	7	M Brentford A
10	S	Swindon Town	H	12	S Southend U. H
17	S	Chester	A	19	S Blackpool A
24	S	F.A. Cup 1		28	S Grimsby Town H
Dec. 1	S	Blackpool	H	May 3	S Wimbledon A

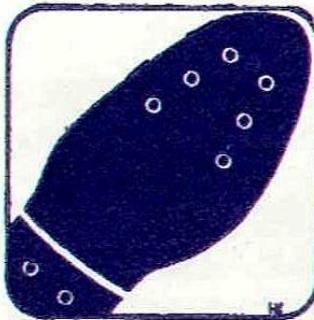
THE SCORES

A	Brighton v Liverpool.....	M	Birmingham C. v Cambridge U.....
B	Bristol R. v Derby C.....	N	Leicester C. v Burnley.....
C	Coventry C. v Leeds U.....	O	Luton T. v Q.P.R.....
D	C. Palace v Arsenal.....	P	Notts. C. v Preston N. E.....
E	Everton v Middlesbrough.....	Q	Shrewsbury T. v Watford.....
F	Ipswich T. v Aston Villa.....	R	Barnsley v Exeter C.....
G	Man. C. v Man. U.....	S	Blackburn R. v Chesterfield.....
H	Southampton v Nottm. F.....	T	Blackpool v Sheffield W.....
J	Stoke C. v Wolves.....	U	Bury v Millwall.....
K	Tottenham H. v Bolton W.....	V	Sheffield U. v Gillingham.....
L	West Brom. v Norwich C.....	W	Wimbledon v Rotherham U.....



**BARRETT
SPORTS**

Leeming Street,
Mansfield
Tel. Mansfield 23244



*Mansfield's Leading
Sports Equipment
and
Clothing Suppliers*

**Official Suppliers
to
Mansfield Town**

- ADIDAS
 - GOLA
 - PATRICK
 - UMBRO
 - POWER
 - DUNLOP
 - SIMLAM
 - MITRE
 - SLAZENGER
 - STUBURT
 - UNWIN
- and all other Leading Manufacturers

**Friendliness.
We built a
bank on it.**



Yorkshire Bank

Moot Hall, Market Place,
and Stockwell Gate, Mansfield, Notts. NG18 1HS.
Telephone: Mansfield 29226 (5 lines).
Manager: Jamie W. Clement.
Late night opening: Thursday 4.30pm to 6.30pm.

TODAY'S LINE-UP

Mansfield

Amber Shirts, Blue Shorts

- 1 Rod ARNOLD
- 2 Derek DAWKINS
- 3 Ian WOOD
- 4 Neville HAMILTON
- 5 Kevin BIRD
- 6 J. McCLELLAND
- 7 John LATHAN
- 8 Steve TAYLOR
- 9 Terry AUSTIN
- 10 Arthur MANN
- 11 Russ ALLEN

Swindon T.

Red Shirts, White Shorts

- 1 Jimmy ALLAN
- 2 Russell LEWIS
- 3 Andy FORD
- 4 Ray McHALE
- 5 Billy TUCKER
- 6 Ken STROUD
- 7 Ian MILLER
- 8 Chris KAMARA
- 9 Andy ROWLAND
- 10 Alan MAYES
- 11 Brian WILLIAMS
- 12 Bryan Hamilton

REFEREE

Jeff SEWELL
(Leicester)

Started refereeing when 16 in local Leicestershire leagues and progressed via the Central League to the Football League full list. Refereed the 1970 F.A. Sunday Challenge Cup Final and was senior linesman in an under-21 International — Belgium v France in 1975. Senior linesman in 1978 F.A. Cup semi-final.

A married man, he has two daughters, and is a Production Control Engineer. Spends much time instructing and lecturing new referees, but is interested in all sports generally, and plays squash, tennis and cricket. Is also a keen gardener.

LINESMEN

K. D. Breese
(Red Flag)

M. E. Hazzard
(Orange Flag)

PYES'

of Mansfield



Austin Morris Rover Triumph

SUTTON ROAD
MANSFIELD
Telephone Mansfield 33231/4

THURSDAY'S LINE-UP

Read **STAN SEARL'S** Match Report
and the **MICK JONES** Column
Exclusively every week in 'CHAD'

TODAYS MATCH
BALL SPONSOR